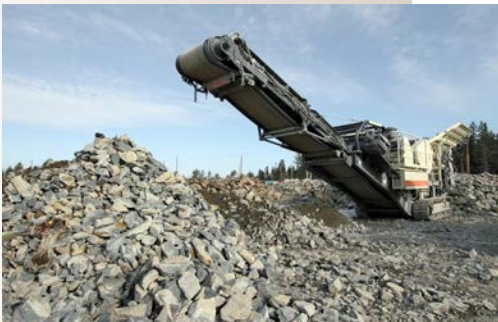


I N T R O D U C I N G

# EM Actuated Heavy Duty Clutch



- Patented New Style Electrically Actuated friction clutch unit for off-road and industrial applications
- 12 or 24 Volt DC operation up to 120 Watts
- Quick reacting engagement and disengagement for positive responses – much quicker than pneumatics or hydraulics
- A simple retrofit from a pneumatic clutch – No compressor required
- Self contained unit with only a two wire connection and simple on-off switch for operation
- High Torque in a small size by use of high coefficient durable friction linings designed for industrial applications that are fade and temperature resistant
- Customizable interfaces available to suit end users installations
- Suitable for shaft to shaft style couplings arrangements with no need to “gun drill” shafting
- Maintenance free with self adjusting for friction lining wear.
- Suitable for extreme low temperature service – eliminates freezing of the air hose connections.
- Currently available in 14” friction disk size. The 11” and 18” friction disk sizes to be released in the near future.



## Model EM314SVC

- Clutch Performance at 4 Amps 12-24 Vdc
- 5,000 Ft-Lbs when Fully Burnished
- Maximum Engagement and Disengagement Speed 1000-1200 RPM
- Maximum Rotation Speed 2200 RPM
- Weight 335 Lbs

