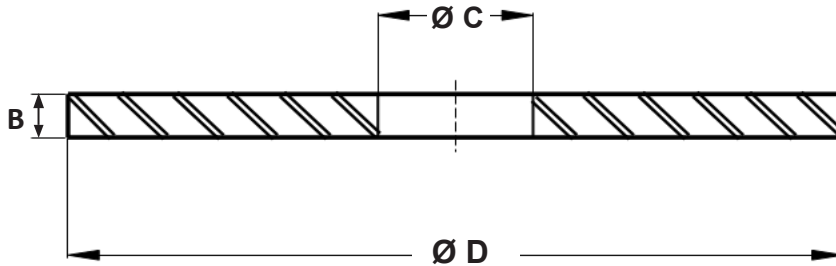
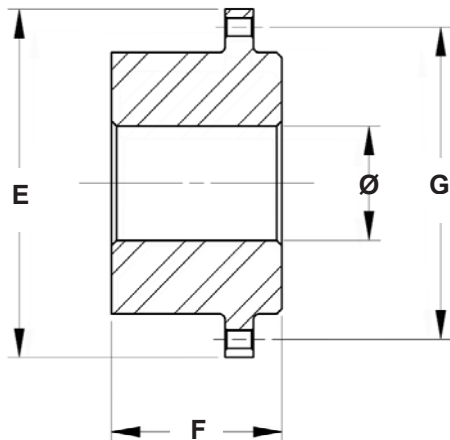


Flat Brake Discs and Hubs


Thickness variation of disc flange: ± 0.007 " total variation
 Surface finish = 80 micro-inch or better
 C = Pilot Bore

Disc Ø D [Nominal]		B	Ø C	Part No.:	Weight		Inertia (kgm ²)	Max Safe Disc Speed (rev/min)
[mm]	[inch]				[kg]	[lbs]		
300	12	12.7	50	400111	6.8	15.0	0.08	4500
400	16	12.7	100	400112	11.7	26.0	0.25	3450
610	24	12.7	125	400113	27.9	61.5	1.35	2500
		25.4		400114	55.6	122.6	2.69	
915	36	25.4	125	400135	128	282.9	13.7	1500

Non-standard Brake Discs can be supplied to order at extra cost.
 Dimensions are in mm.



Hub Size	E	F	Ø Max	G	Part No.:	Inertia (kgm ²)
100	146	87	65	120.6	400121	0.01
200	200	117	95	174.6	400122	0.05
300	272	155	130	246.6	400123	0.26
400	308	178	150	282.6	400124	0.52

Non-standard Brake Discs can be supplied to order at extra cost.
 Dimensions are in mm.